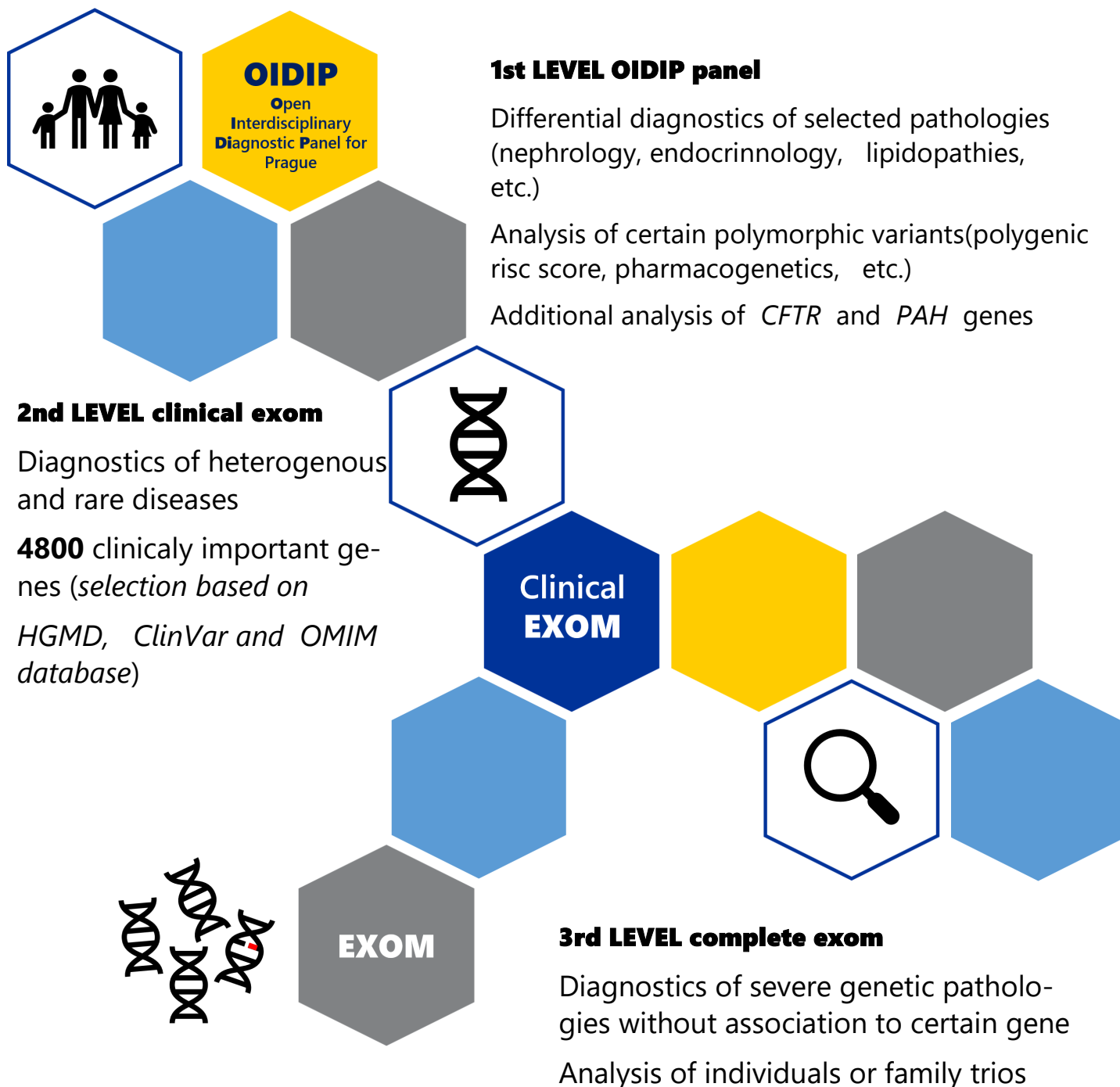




EUROPEAN UNION  
European Structural and Investing Funds  
Operational Programme Prague -  
the Growth Pole of the Czech Republic



New diagnostics concept of the 1st Medical Faculty, Charles University, for routine DNA diagnostics of heritable diseases



For more information: <https://oidip.lf1.cuni.cz> or [www.oidip.cz](http://www.oidip.cz)

Contact e-mail: [oidip@lf1.cuni.cz](mailto:oidip@lf1.cuni.cz) or [info@oidip.cz](mailto:info@oidip.cz)

Project „Commercialization of the output of research of the 1st MF, ChU and their implementation in praxis“; reg.n. CZ.07.1.02/0.0/0.0/17\_049/0000828 funded by the Operational Programme Prague–growth pole Czech Rep.